

# Lawrence Berkeley National Laboratory Community Advisory Group

September 17, 2018

Michael Brandt  
Deputy Director for Operations

# FY 2019 Energy & Water Appropriations

**JBEI** Agile BioFoundry **KBase**  
Joint BioEnergy Institute PREDICTIVE BIOLOGY

**JGI** JOINT GENOME INSTITUTE  
A DOE OFFICE OF SCIENCE USER FACILITY

**NGEE-TROPICS**  
NEXT-GENERATION ECOSYSTEM EXPERIMENTS

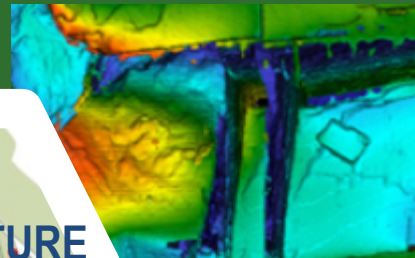
**AMERIFLUX** **ENIGMA** **Watershed Function**

The Ecosystem Manipulatory  
ecoFAB ecoTECH ecoSENSE ecoSIM

BIOLOGICAL and ENVIRONMENTAL SCIENCE at the BIOCAMPUS



BREAKTHROUGH SCIENCE at the EXASCALE



INFRASTRUCTURE RENEWAL

SCIENCE with THE UPGRADED ADVANCED LIGHT SOURCE

DISCOVERY SCIENCE in FUNDAMENTAL PHYSICS

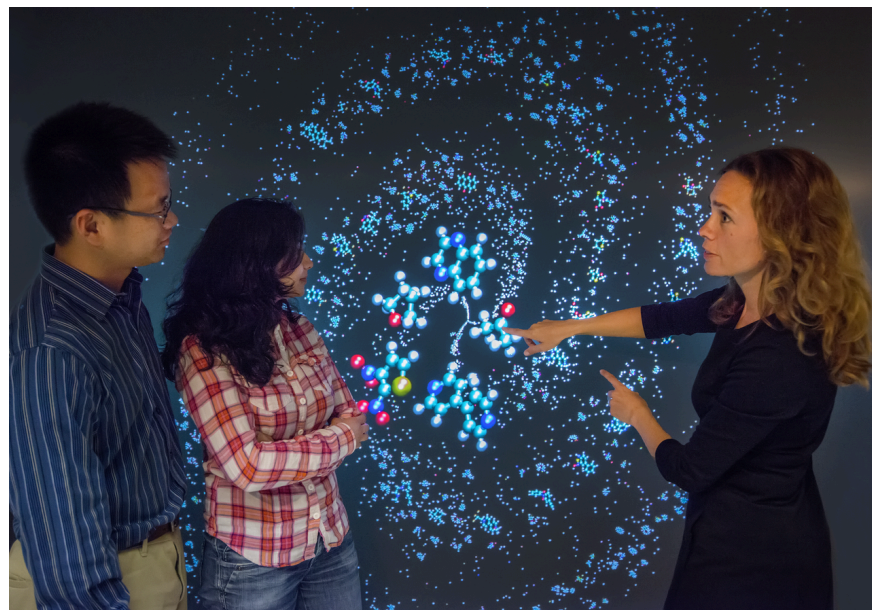


# Secretary of Energy's Achievement Awards



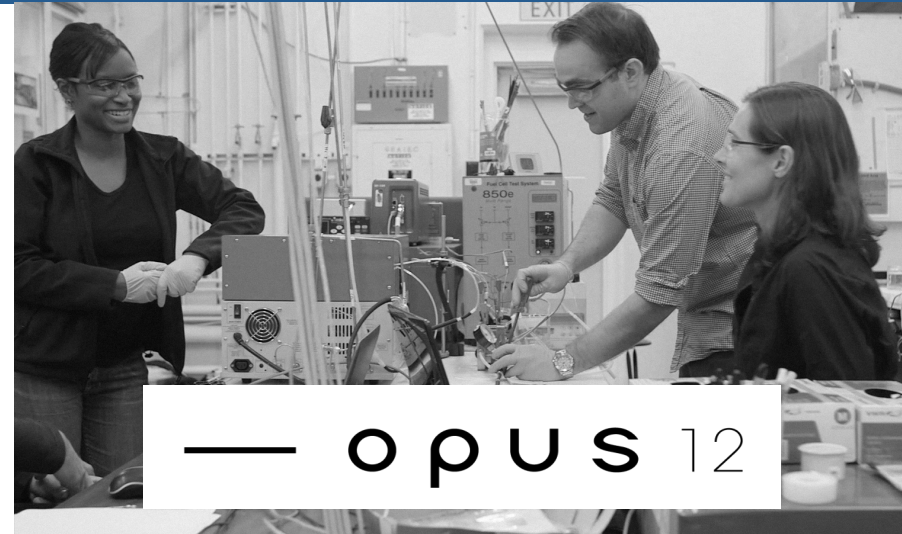
Joint BioEnergy Institute - recognized for pioneering the development of biomass-derived ionic liquids that support efficient, scalable, and economically viable production of biofuels and co-products.

Joint Center for Energy Storage Research - recognized for research to develop high-performance, low-cost energy storage technologies for transportation and the electric grid.



# R&D 100 Awards - 2018 Finalists

Berkeley Lab is at the forefront of innovation.



# Berkeley Lab ... Building Community Partnerships



# Thank you

